



ARRIVAL BY CAR

Due to a temporary construction site in front of the Wolfgang Borchert Theater, a short detour is required to arrive at the H7. Currently the only option to arrive by car is via "Kiesekamps Muehle". Please check the map below for instructions.

ARRIVAL BY BUS

To get to the H7 from the Muenster Main Station by bus, you can take lines **6, 8, or 17**. Exit at the **bus stop "Stadtwerke/Hafen"**. Walk across the "Hafenplatz" and take the street "Am Mittelhafen". This will lead you between the Wolfgang Borchert Theater and the "Stadtwerke Muenster" directly to the H7 (on your left).

ARRIVAL BY BICYCLE

With a bicycle you can pass through the construction at the Wolfgang Borchert Theater. Please park your bicycle at the front entrance or on the park deck.

ARRIVAL BY BOAT

Dock your boat directly at the H7 and take the path on the right side of the building directly to the main entrance.

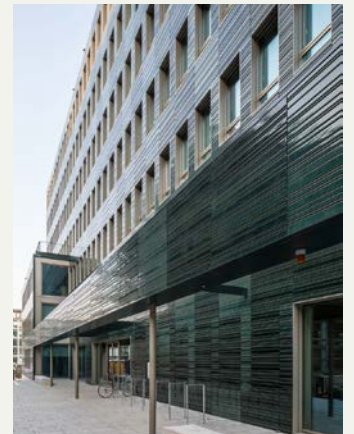
ARRIVAL BY TRAIN

Leave the train station towards Bremer Platz, and turn right onto the Bremer Strasse. Cross the Hansaring onto the

Albersloher Weg. Take the first street to your left (Bernhardt-Ernst-Str.) and follow it, until it turns into "Mittelhafen". Once you have passed the construction site, the H7 is on your left. Walking from the train station to the H7 will take approx. 10 minutes.

PARKING

The underground garage at the H7 is not a public parking space. Please discuss any parking options with your host before arriving by car, and check if they can offer you a parking spot in the underground parking or "on deck". Otherwise please use one of the public parking facilities around the H7.



CONTACT

DESRAD Immobilien GmbH & Co. KG
 Am Mittelhafen 16
 48155 Münster
info@h7-münster.de
www.h7-münster.de

